

Installing and Testing Elluminate

Step 1: Please go to <http://www.elluminate.com/support/>

Step 2: If you see the red X on your screen then please follow all the steps, otherwise if you see a green check mark on your screen then please skip to step 4



"The red X, please follow all steps"

"Green check-mark, please skip to step 4"

Step 3: Click on "Download and install the required software" and then click on "Get Required Software". Follow all the prompts from there.



Step 4: You will see the following screen if you have successfully installed the software or already have Elluminate on your computer. Click on the “Configuration Room”

Support

First Time Users

Elluminate Live!® requires Sun Microsystems **Java Web Start™** to be installed on your machine.

 **Congratulations, you appear to have the required software to launch Elluminate Live!**

To complete your setup, join our Configuration Room

Learn more about Elluminate Live!

- ▶ Online Orientation
- ▶ Quick Reference Guide
- ▶ Recorded Introduction

[Java Offline Installation Download](#)
Java International Version for Windows

Tools

- [PowerPoint Converter Tool](#)
- [Presentation Wizard BETA](#)

Resources

- [Help Desk](#)
- [Technical Support](#)
- [Troubleshooting Wizards](#)
- [Java Accessibility Bridge](#)
- [Translation Project](#)
- [Guides & Reference](#)
- [Live Online Training](#)
- [Join our Support Email List](#)
- [Contact Us](#)

Technical Tips

- ▶ Problems/Issues after updating to Java 1.5 (J2SE 5.0)

Technical Bulletins

Step 5: Fill in your name and click “login”

Sign In

Please enter your name for the session.
(Note: The Name may not exceed 32 characters)

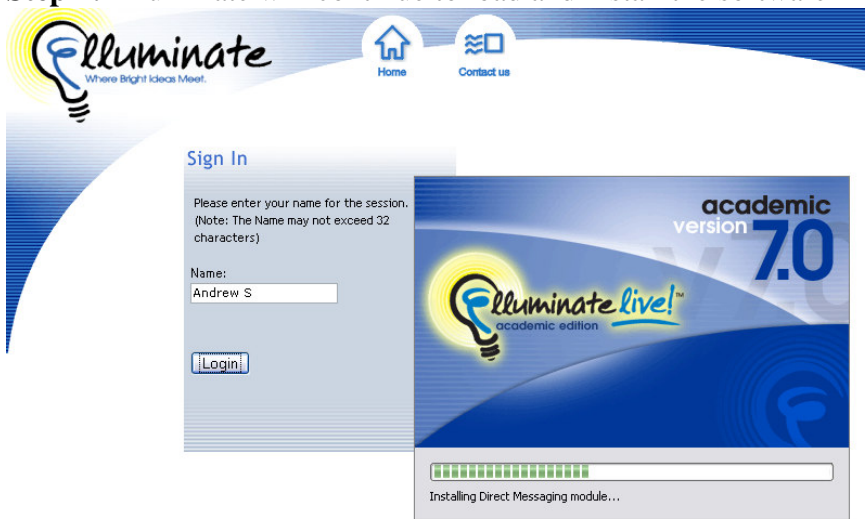
Name:

©2001-2006 Elluminate, Inc.
All Rights Reserved. (101P)

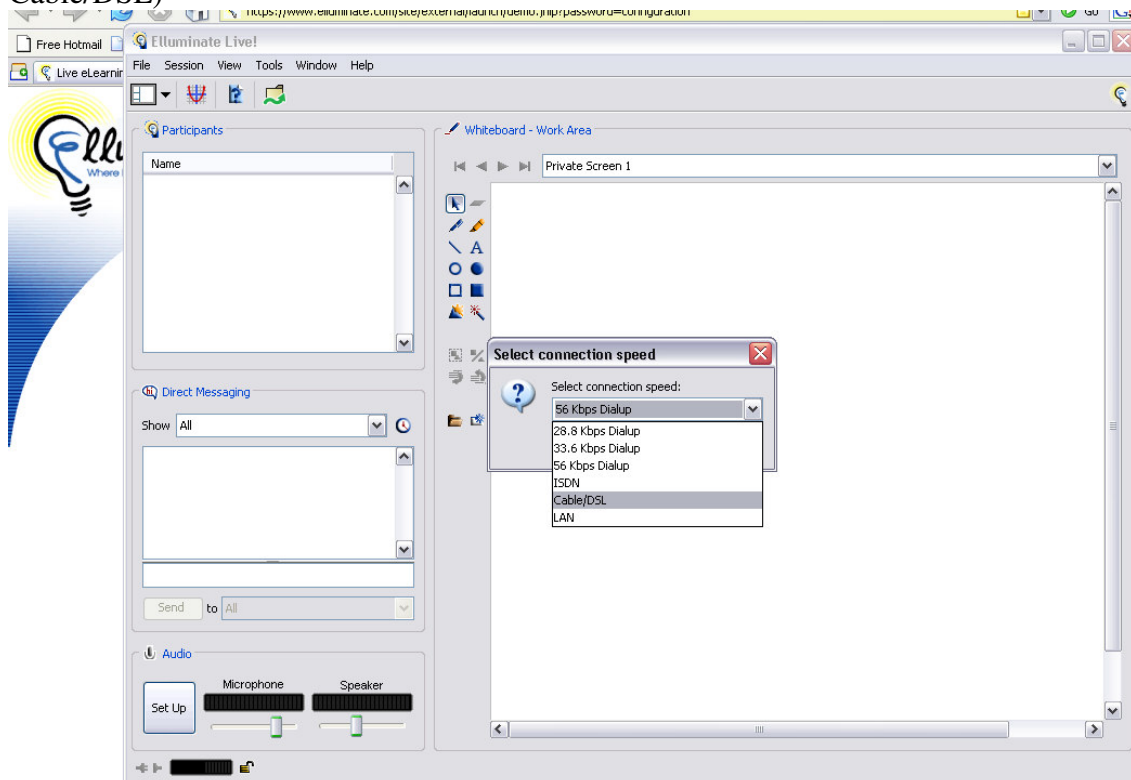
Step 6: Elluminate will start to load up and check that you have the latest software.



Step 7: Elluminate will continue to load and install the software



Step 8: Elluminate has now finished loading, please select your speed. (it will most likely be Cable/DSL)



Step 9: Elluminate has successfully loaded and you are ready to begin training. Invitations for training will be sent out a few days before training.

