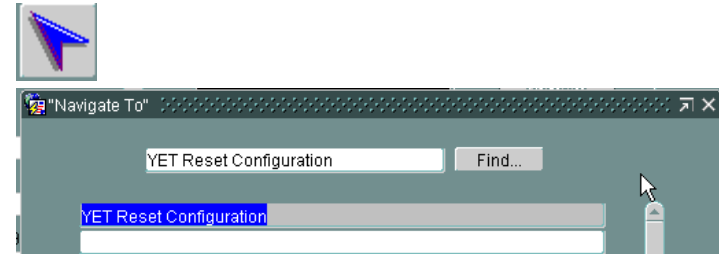


## Year End Transition— Reset parameters for YET

Before Year End Transition (YET) is run, all districts and schools should review which decisions regarding reset options are available to them. This can be achieved by navigating to *YET Reset Configuration* screen and reviewing which flags are still available to be selected.

The table below indicates the reset options and the implications of each choice at the school, district and enterprise level. All non-null enterprise selections are shown in italics. Remember that if a **Yes** or **No** option has been set at the enterprise level, neither districts nor schools can change it and it applies to all districts and schools in BCeSIS. Schools can only select a value if their district has left it blank (or Null). If any value is left as Null by the enterprise, district and school, YET will treat it as a No.



Reset Option	Enterprise Choice	What Happens	District Choice	What Happens	School Choice	What Happens
<b>Release of Info</b>	Null	Left to District or School choice	Yes	All schools in the district would have to re enter the parent choices for release of information after YET.	No choice as this has been set at the District level.	
			No	The choices by parents for release of information would carry over from one year to the next for all schools in the district.		
			Null	Left to school choice. For transferring students the <b>new</b> school choices prevail. If no choice is made by the school this is the same as choosing <b>No</b> .	Yes	
					No	The choices by parents for release of information would carry over from one year to the next for that single school.
<b>Internet Access</b>	Null	This is set as Null at the Enterprise Level and would follow the same pattern of choices as <b>Release of Info</b> . For				

## Year End Transition— Reset parameters for YET

Reset Option	Enterprise Choice	What Happens	District Choice	What Happens	School Choice	What Happens
<b>Permission</b>		transferring students the <b>new</b> school choices prevail.				
<b>Medical Card</b>	No	<i>Medical Card information will carry over if schools keep this information on record.</i>				
<b>Counsellor</b>	Null	Left to District or School choice	Yes	All schools in the district (that used counsellor assignments to students) would have to reassign counsellors after YET.	No choice as this has been set at the District level.	
			No	All schools in the district would have counsellor/student assignments carry over each year.		
			Null	Left to school choice. For transferring students the <b>old</b> school choices prevail. If no choice is made by the school this is the same as choosing <b>No</b>	Yes	
	No				No	That school would have counsellor/student assignments carry over each year.
<b>Mentor/Advisor</b>	Null	This is set as Null at the Enterprise Level and would follow the same pattern of choices as <b>Counsellor</b>				
<b>All Student Transportation/ Routing Info</b>	Null	Left to District or School choice. Note, on transfer of student, transportation information is always deleted.	Yes	All schools in the district would have to re-enter bus route information after YET. Note, special circumstances and the driver/car information are not deleted with the bus transportation.	No choice as this has been set at the District level.	
			No	All schools in the district would have bus route information carried over each year.		
			Null	Left to school choice. Note, on transfer of student, transportation information is always deleted. If no choice is made by the school this is the	Yes	

## Year End Transition— Reset parameters for YET

Reset Option	Enterprise Choice	What Happens	District Choice	What Happens	School Choice	What Happens
				same as choosing <b>No</b>		driver/car information are not deleted with the bus transportation.
					No	School bus route information would carry over from year to year.
<b>Team/Group Membership</b>	Null	Left to District or School choice. Note, on transfer of student, team and group information is always deleted.	Yes	YET will move team members into the next year if they are still active in the school.	No choice as this has been set at the District level.	
			No	YET will not move team members to next year. Note: if the school has already copied team members to next year, those team members will remain untouched by YET.		
			Null	Left to school choice. For transferring students the <b>old</b> school choices prevail. If no choice is made by the school this is the same as choosing <b>No</b>	Yes	YET will move team members into the next year if they are still active in the school. Schools must also copy teams and groups to next year as outlined in the Pre-Scheduling Guide.
					No	YET will not move team members to next year. Note: if the school has already copied team members to next year, those team members will remain untouched by YET.

## Year End Transition— Reset parameters for YET

Reset Option	Enterprise Choice	What Happens	District Choice	What Happens	School Choice	What Happens	
<b>Student Correspondence</b>	Null	Left to District or School choice. Note, on transfer of student, correspondence information is always deleted.	Yes	Student correspondence for all schools in the district would be deleted at YET.	No choice as this has been set at the District level.		
			No	Student correspondence for all schools in the district would be carried over and accessible from year to year.			
			Null	Left to school choice. For transferring students the <b>old</b> school choices prevail.	Yes		Student correspondence for that school would be deleted at YET.
				If no choice is made by the school this is the same as choosing <b>No</b>	No		Student correspondence for that school would be carried over and accessible from year to year.
<b>Student Medication Info</b>	Yes	<i>Student medication information will be deleted at YET. Except if the medication end date is less than the year end transition date.</i>					
<b>Individual Course Plan</b>	No	<i>Individual course plan information will carry over for all schools.</i>					
<b>Least Restrictive Environment</b>	Null	Ignore as this is related to SPED and will change once the BC SPED is in place.					
<b>Determine Next School and Set Assignment/Exception Codes</b>	Yes	<i>YET it will assign the students to the Next School that has been set in pre-transition with the exceptions set in pre-transition.</i>					
<b>Delete Attendance Intervention</b>	Null	Left to District or School choice.	Yes	Attendance Intervention information for all schools in the district would be deleted at YET.	No choice as this has been set at the District level.		
			No	Attendance Intervention information for all schools in the district would be carried over and accessible from year to year.			
			Null	Left to school choice. For transferring students the <b>old</b> school choices prevail.	Yes		Attendance Intervention information for that school would be deleted

## Year End Transition— Reset parameters for YET

Reset Option	Enterprise Choice	What Happens	District Choice	What Happens	School Choice	What Happens
				If no choice is made by the school this is the same as choosing <b>No</b>		at YET.
					No	Attendance Intervention information for that school would be carried over and accessible from year to year.
<b>Reassign Case Manager</b>	Null	Left to District or School choice.	Yes	For all schools in the district that assign case managers, the case manager assignments will remain for all students from year to year.	No choice as this has been set at the District level.	
			No	For all schools in the district that assign case managers, students will be removed from their case assignment and need to be reassigned a case manager at the start of the new school year.		
			Null	Left to school choice. For transferring students the <b>old</b> school choices prevail. If no choice is made by the school this is the same as choosing <b>No</b>	Yes	
					No	Students will be removed from their case assignment and need to be reassigned a case manager at the start of the new school year.
<b>Archive GPA Data</b>	Null	This is set as Null at the Enterprise Level and would follow the same pattern of choices as <b>Deleting Attendance Information</b> .				